

## INSIDE

President's Desk.....	1
Winter Parking .....	2
Newburg Baseball .....	2
Public Works.....	2
Wellspring Garden.....	3
Newburg Lioness Club ....	3
Garden Detective.....	3
Taxes & Dog Licenses....	6
Clean Up After Pets .....	6
Your Tree.....	6
Spring Election .....	6
Fire Chief.....	6
Planning Comm. ....	6
4-H Club.....	7
Fire Chief.....	6

**Emergency Government – will be testing the tornado siren the first Monday of each month at 11 a.m.**



## From The President's Desk

*By President Bill Sackett*

Well, another year has gone by. I sincerely hope everyone had a great holiday and I wish the happiest of New Year to all.

April will soon be here which means elections. The Village of Newburg will have three Trustee seats and the Village President position to be filled. The Village of Newburg residents came out in huge numbers for the November election. Over 70% of the eligible residents in the Village voted and I applaud you for doing so. It would be great to see this size of a turnout for the April election voting for individuals on the ballot or write ins, your choice, provided you by the constitution of the United States of America.

Over the past 12 years, 10 as Trustee and 2 as Village President, I have been proud to serve this community. However, I regret having to inform you that I will not be on the ballot in April for President or Trustee. I would like to sincerely thank those who had supported me in the last two years and would have again.

There are a lot of important issues that will come before the Board of Trustees for action. I sincerely hope that they will gather all the information required to make a decision that will best serve the whole Village of Newburg and head it into the future on a positive path.

---

## Snow Emergency Parking

From November 1<sup>st</sup> to April 1<sup>st</sup>, except on Main Street (CTY. MY) parking shall be permitted only on the even numbered sides of the streets on even-numbered dates as of 11 p.m. the previous night to 6 a.m. the following morning and on odd numbered dates as of 11 p.m. the previous night to 6 a.m. the following morning. Violations of this ordinance will result in a \$25 ticket. If the vehicle has not been moved within 24 hours, the vehicle may be towed away and the owner will be responsible for towing (\$55) and storage costs. The vehicles will be towed to Goeden's Auto Body in St. Michael's.

# NEWBURG BASEBALL

by Phyllis Damrow

It's that time of year for the baseball season to get the ball throwing.

Baseball sign-up dates are:

Saturday, February 17<sup>th</sup> from 9-noon

Saturday, March 3<sup>rd</sup> from 9-noon

- Girls ages 6-9 and boys ages 6-8 for Co-Ed League
- Girls ages 10-15 for slow pitch
- Boys ages 9-11 for fast pitch
- Boys ages 12-13 for traveling fast pitch and
- Pony League ages 14-15 for traveling fast pitch.

This will take place at the Newburg Fire Station on Main Street. All participants must sell candy or give a \$25 cash donation per child and must register on the above dates. Also this year for parents – **IT IS MANDATORY** that you work in the concession stand for 2 hours per child that you have enrolled in our program.

For more information, please contact Phyllis Damrow at (262) 689-0712.

---

## PUBLIC WORKS

Phil Beitz

Chair, Public Works Committee

December 1<sup>st</sup> gave us our first test of the season in major snow removal efforts. I was very favorably impressed with the performance of our Public Works employees. They were prepared to begin operations at 3:00 a.m., the predicted start of the storm, but held off any



activity until the snow started in earnest at 5:30 am. Through the early morning hours efforts were directed toward keeping the main streets open and traffic was able to flow freely through the Village. Cleanup efforts continued through the afternoon and all streets were in good shape by evening. Final cleanup was done on Saturday morning to handle the areas opened by the alternate side parking. Public Works thanks the Newburg citizens who observed the alternate side parking restrictions. Your cooperation was an immense help in allowing the cleanup in a timely manner.

I would like to remind you that Chapter 8.06 of the Municipal Code requires that the owner of each property in the Village shall clear the sidewalk abutting that property, to the full width of the sidewalk, within 24 hours after the cessation of a snowstorm. That includes opening access to the crosswalk on corner lots. Cooperation with this was less than desirable, particularly along Main Street. The ordinance provides penalties for failure to clear these walkways and allows the Public Works Department to summarily clear them and bill the cost of clearing to the property owner. Downtown businesses depend on their customers being able to access their establishments and it is important that all of them cooperate with each other to keep access open. It is also important to the convenience and safety of pedestrians using all sidewalks in the village.

The Public Works Committee has begun mid-range planning for street improvement projects starting in the downtown area from the river to Hwy 33 and East of the bridge. Logical construction sections will be identified, prioritized and cost estimated. These recommendations will be sent to the Personnel and Finance Committee to reach recommendations on financing and estimate how rapidly they can be implemented. We hope this process can result in recommendations to the Village Board in six to eight months.

Recycling acceptance hours at the municipal garage will be changing due to a low volume of demand and an opportunity to reduce costs. The new hours will be 9:00 am to noon on the second and fourth Saturday of the month.

We at Public Works hope you all had a blessed and joyous holiday and New Years holiday season.



## Wellspring Garden

### Compost

Thanks to neighbors who added their leaves to our compost piles in the fall.

Within months the leaves will break down and become fertile soil. The resulting compost enriches the gardens that grow the vegetables.

### Organic Vegetables

We all know that we need to eat our vegetables to stay healthy. Nothing like good organic food grown locally. Wellspring can be your source of healthy vegetables this season. Families are signing up now for 25 weeks of produce., May to November The arrangement is called CSA - Community Supported Agriculture, a partnership between grower and consumer. Wellspring begins its 20th season as a CSA this year Wouldn't you like a share of the garden, right from your neighborhood? Call Mary Ann Ihm at (262) 675-6755 for details.

---

## Newburg Lioness Club

*By President Linda Grasse*

Our "Pictures with Santa" event was a big hit this year, with approximately 100 children sharing their Christmas wishes with Santa. The children posed with both Santa and Cody the miniature horse for holiday photos. Also, budding artists participated in a coloring contest, and children created festive ornaments for their parents. Winners of the coloring contest were: Jesse Verbanac, age 10 and up, Taylor Sackett age 8 & 9, Alexis Bolinger age 6 & 7, Kirsten Krause age 4 & 5 and Drake Falkner age 1-3.

On December 3<sup>rd</sup> the Lioness Club along with their other Newburg community members braved the cold to participate in a tree-lighting and an unveiling of a new Christmas sign the Lioness donated to the Village of Newburg. Randy Igel of Creative Sign in Mequon created the sign which wishes all a Merry Christmas and Happy New year. Next to the sign stands two trees. One is decorated with lights and the other with ornaments made by the children of Apple Blossom Day Care and St. John's Lutheran Church in Newburg. The children from St. John's also supplied lively entertainment for the tree lighting by signing Christmas Carols.

One December 17<sup>th</sup> our club met at the Sackett household to assemble Christmas meals. We delivered 30 complete turkey dinners to members of our community. We saw a lot of smiles that day!

### Upcoming events

In April our club will hold their annual Easter Egg Hunt at Welcome H.O.M.E. Bed & Breakfast. Bring your little ones with their baskets to meet the Easter Bunny and hunt for eggs.

Our annual flower sale will begin in April with delivery before Mother's Day. What a great Mother's Day gift. Please see any Lioness member to place your order.

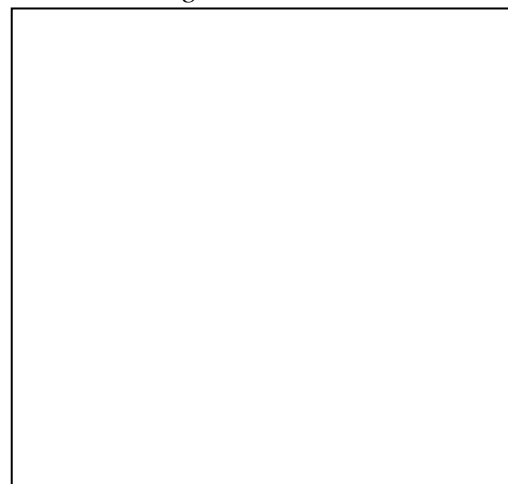
---

## THE GARDEN DETECTIVE

*Ask a Master Gardener....Barbara McHugh*

January, 2007

I work with the Yard and Garden Line at the University Extension Office in Port Washington and this column is a community outreach program sponsored by the Ozaukee Master Gardeners.



**Now on to this months mysteries..**

## "The Case of The Persnickety Pine"

### QUESTION:

Dear Garden Detective,

I won a live Christmas tree this year in the workplace raffle. It is a Norfolk Island pine. The label that came with the tree says that I can plant it outside. The label also says that it is hardy to 30 degrees. I am not sure if I should try to plant it outside or keep it as a houseplant. What do you suggest?

Pamela in Saukville

### ANSWER:

Dear Pamela, The American Heritage dictionary defines the word "persnickety" as "Very particular about details: fastidious" This pretty much sums up what you would have to be to give the Norfolk Island pine the care it needs to survive here in Wisconsin.

The Norfolk Island pine is native to the South Pacific tropical islands. You should consider this pine a houseplant. It is not hardy in our neck of the woods by any stretch of the imagination. The plants usually come with about three to four little trees per pot. If you do not transplant and separate them, the roots will eventually graft together and strangle each other causing the tree to die or fail to thrive. They do not like to be transplanted but with some care you can manage it and quite frankly, you must.

### Re-Potting

Re-pot in the spring into medium size pots. Place newspapers on a table or other surface. Turn the pot on its side and knock the bottom until the plant loosens from the pot, moist soil will

help in this process. Gently separate the trees and place them in separate pots with a commercially available potting mixture. Plant the trees at the same depth as they were in the original pot. Gently firm the soil with your hands and water it. Allow the water to firm the soil around the roots. Make sure the pots are free draining. Place the pots in an area where they will receive plenty of indirect light or the plant will lose needles.

### Care

These plants need lots of humidity... think about the plant's tropical origin and it becomes clear why this is a critical factor in its survival. If the trees become dried out they are very unforgiving and will lose their lower branches and the needles will become brown. Our over heated, dry houses are not the environment that is ideal for these tropical plants. You can mist the plant with plain water, and place it away from heating vents. A humidifier in the room is also helpful. As the plants become larger you will need to transplant them to the next size pot. The ideal temperature for these plants is around 65 degree F. The other concern is too much watering. This will also damage the lower branches and needles. The best method is to allow the soil to dry out a little before watering. There is a fine balance between too much water and allowing the plant to dry out.

In spite of the "very particular" needs of this persnickety plant, it can bring you many years of joy if you have the patience to tend it carefully. If you are not up to this task, I suggest you re-gift it to a friend with a green thumb.

## "The Case of The Nocturnal Noshers"

### QUESTION:

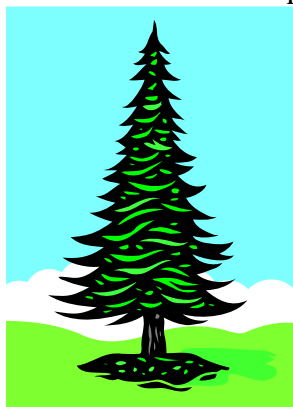
Dear Garden Detective,

I noticed that this summer I have seen a lot of earwigs in my garden, are they harmful to my plants?

Roy in Newburg

### ANSWER:

Dear Roy, It is possible that there has been some damage to your plants caused by earwigs, but usually this insect is more of a nuisance than a real threat to the health of garden plants. You will have to play a bit of hide and seek with these "Nocturnal Noshers" to catch the culprits in the act of munching and then you will have to decide if it is worth the work to eradicate them from your garden.



I suggest you just all learn how to get along, but when it comes to a gardener's love of plants the insect usually loses out.

### **Identification of earwig damage**

You should suspect earwig damage if you find damage to your plants but you can't find any insects on the plants during the day... One way to figure out if the earwigs are the culprits is to look at your plants at night with a flashlight and you will see the little buggers dash for cover as the beam hits them, much like cockroaches (which earwigs are mistaken for at times). Don't let your neighbors see you doing this or you may be branded for life as a geek like myself. Earwigs hide during the day under dark and damp places and come out at night to eat an omnivorous diet of other insects and plants. This diet can be beneficial. They feed on aphids, mites, fleas and insect eggs. They also feed on dahlias, marigolds, lettuce, potatoes and hostas. They also feed on mosses, lichen, and algae.

### **Plant Damage**

Earwigs eat small holes in plant leaves. The damage from the insect is small compared to the large pest populations present and it can be confused with injuries caused by slugs, cutworms or even rabbits. Larger plants can tolerate the feeding but seedlings and flowering plants can be severely damaged or killed by dense populations. If you ascertain that the damage to your plant life is caused by earwigs you will need to balance the possible good they are doing by eating the other insects and the damage they are causing in the process. Remember, it usually takes a large

infestation of these insects to cause any serious damage.

### **Control**

If you have made the decision to get rid of these pests, there are several different approaches you can use. It depends on how much trouble you want to go to.

### **Environment**

You can change the environment that attracts the earwigs to your garden. They are attracted to shaded areas, and lush plant material, boards, etc. You can convert the back yard to a dry sunny environment with few hiding places, (really folks, this was actually one of the solutions I found on my University source...) but this does not seem like a practical solution to the problem.

### **Traps**

You can trap the earwigs in rolled up newspapers or in old tuna fish cans baited with fish oil or vegetable oil. Place the traps near the problem areas and check every morning. Shake the live insects into a pail of soapy water to kill them. (Personally, I think you may attract more of the neighborhood cats to the area than earwigs).

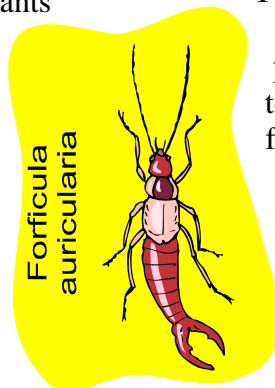
### **Insecticidal Solution**

**ORGANIC** The more natural approach is to use insecticidal soaps that are available at your local hardware store or nursery. You must spray this on the earwigs themselves for it to work. Do not attempt to make your own insecticidal soap as you can do more damage to the plants than the earwigs were doing. You would once again have to either go into the garden at night to spray the earwigs or find where they hide in the day and spray them there. I usually favor the natural approach first.

### **Chemical**

If the natural approach does not work you can break out the big bad stuff such as carbaryl, (Sevin) .You would use this insecticide as a barrier treatment. You would use this on the mulched areas of flower beds and not apply directly to the plants as they might cause harm to bees and other good insects. Insecticides should be used late in the day, and you should always follow the manufactures instructions very carefully.

I hope I have cleared up any misconceptions about earwigs, and I also hope you have a little fun this summer playing hide and seek after dark. Remember kick the can?... red light green light.... those were the days.



Until next time,

*The Garden Detective,  
Barbara McHugh*

Please send your questions to:

The Garden Detective

7105 Hickory Road

West Bend, WI 53090

or email me at

**gardendetective@execpc.com**

Please include your name, address,

phone number and email, so that I can  
ask you questions about your query.

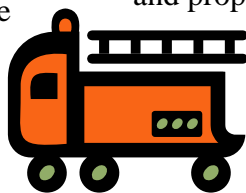
We will not print your full name in the  
paper.

---

## Taxes and Dog Licenses

*By Treasurer Doug Hein*

It's a new year and the real estate  
taxes are due again. If you have a  
dog, a license may be obtained  
when you pay your taxes. All dogs  
must have a rabies vaccination and  
licensed by April 1<sup>st</sup> yearly. Licenses  
obtained after April 1<sup>st</sup> are subject to a  
\$25.00 late charge. A license is required  
for all dogs, whether you own or rent at  
your residence.



---

## Clean Up After Your Pets

While out walking your dog, please take  
the extra moment to pick up after your  
pet and respect the property of others.  
Most dog owners are conscientious  
about their responsibility, but those who  
are not spoil it for everyone. Please help  
keep Newburg clean.

---

## What To Do With Your Tree?

Now that Christmas is over, what do you plan on doing with your real Christmas tree? The Department of Public Works will be picking up Christmas trees on Saturday mornings through the month of January. Please place them out on your curb (or lawn) and they will be happy to dispose of them. Please have all decorations and tinsel off of them.

---

## Spring Election

The Spring Election for 3 Village Trustees and President will be held on Tuesday, April 3<sup>rd</sup>. Nomination papers can be taken out yet, but need to be turned in by 5 p.m. on January 2<sup>nd</sup> to be on the ballot.

---

## Office of the Fire Chief

*By Chief Peter Waldkirch*

As we come to the end of another year, we have so much to be thankful for. Our Newburg Fire Personnel worked hard to protect life and property in 2006. We completed our tasks without serious injury, for that we thank God. Always remember, we are here to help you in time of need – NEVER be afraid to call us.

I hope everyone had a great Holiday, spending it with family and friends and I want to wish everyone a very healthy and prosperous New Year.

The Newburg Picnic in 2007 will be held: June 1, 2 & 3. Visit our website at: [www.newburgpicnic.com](http://www.newburgpicnic.com) for more details.

---

## Planning Commission

*By Trustee Mike Heili*

I hope everyone had a Happy and safe Holiday season.

I would like to say thank you to the Lioness for the Christmas tree and sign by the Gas station. They do so many great things for the Village that goes unnoticed.

With an election just passed and another coming up in April, I just want to say thank you to all of the poll workers that work so hard so that we can all vote.

I think everyone should take the opportunity to vote in all of the elections we have. We had a great turnout for the last election, 70%.

Thank you and great job to all of the workers and to those who voted. Of course the best way to vote smart is to see how the people you are voting for are doing their job. The best way to do that locally is to attend a few of the Board Meetings or Committee Meetings. As of writing this, I chair the Planning Commission, and sit on the Sanitary committee and would really like to see lots of citizens come and add their input to the Planning Commission and other committee meetings also.

The minutes and agendas are posted by the Village Hall, the State Bank of Newburg, and at the gas station. The Board meets the 2<sup>nd</sup> and 4<sup>th</sup> Thursday of every Month at 7 p.m. As of now, the Planning commission is also meeting twice a month; the 1<sup>st</sup> and the 3<sup>rd</sup> Thursday at 7 pm. You're all invited to come and add your input.

At the Planning Commission, we are working very hard on Smart Growth for both Washington and Ozaukee Counties, which is challenging having to look into the future.

Smart Growth is a mandated issue, looking to plan future growth, up to the year 2035. Any input that you would want to add, please feel free to come to the meeting on the 3<sup>rd</sup> Thursday of each month at 7pm. We have designated this time for Smart Growth, but it's not limited to just that meeting. If time allows for Smart Growth work at the 1<sup>st</sup> Thursday meeting, we will work on it there also. Some items we have worked on for Smart Growth are issues and opportunities for the Village. For

example: Riveredge, the Milwaukee River, Hwy 33, plus much more. We've also discussed Housing issues for the future and things like that; and I know that a lot of you have views on this. The Planning Commission needs and wants your input on these types of issues. I know that I welcome your input at the meetings and I hope that the other members do also. I know that President Sackett comes and sits in the audience at just about all the Planning Commission meetings and we welcome his input and views to help us with our job of trying to decide what we think is best for the Village going into the future, up to at least the year 2035 and hopefully past then. Or, at least, have a plan in place that seems sensible and easily adjustable to changes if needed as the future comes to reality.

So as you see, we do have a full plate and would like your input on the future plans for the growth of the Village of Newburg

---

## Myraneer 4-H Club

The Myraneer 4-H club had their September meeting and they voted in new Officers for the year. The President of the club is Cindy Mueller, Vice President is John Falk, Secretary is Hannah Grosskreuz, Treasurer is Kelly Boyea, reporter is Jacob Mueller and the Ambassadors are Jacqueline Halverson and Emily Buchholz.

We also had our annual Halloween Dance on October 28th from 5:30 - 10:00 p.m. at the Newburg Fire Hall in October. It was a big success and a lot of fun.

We also had a great success in our Thanksgiving baskets that we put together for families in our area and members take them to the families. December 2<sup>nd</sup> some of our club members setup and decorated the Christmas tree at the Newburg Bank. We also had our Christmas Caroling December 13<sup>th</sup> at the Regency Manor in Newburg.

---

## Changes in our Government

New changes recently adopted at our board meetings include:

Discussion and possible action on re-wording of 11.06 of the Municipal Code Book to state that no garbage to be placed at the curb more than 24 hours before pick up and no later than 7 a.m. of garbage/recycle collection day. A motion was made by Trustee Heili and seconded by Trustee Beitz to approve this language. Motion passed with 5 yes and 0 no vote.

